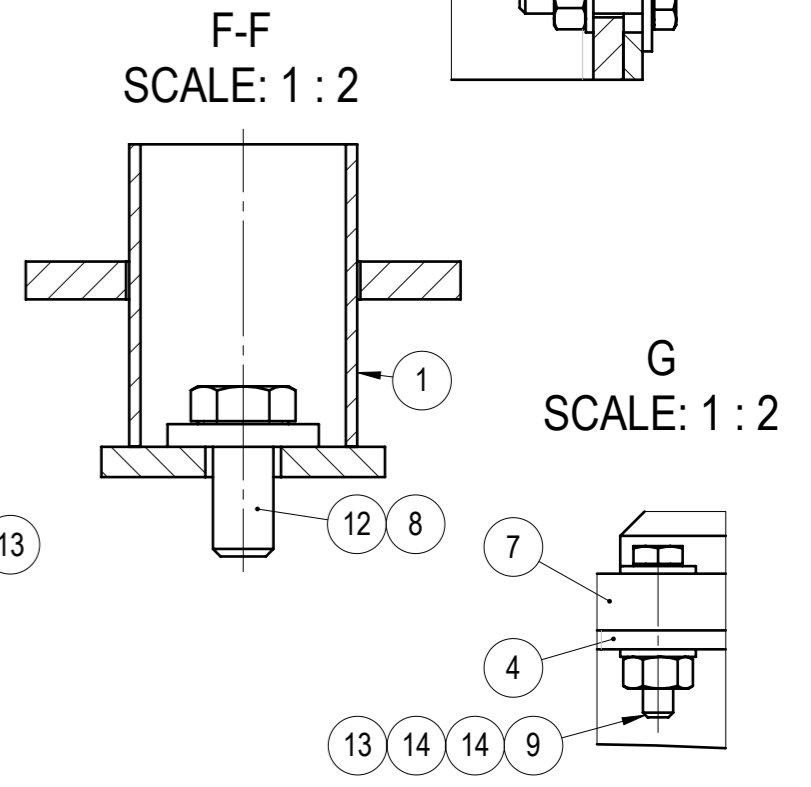
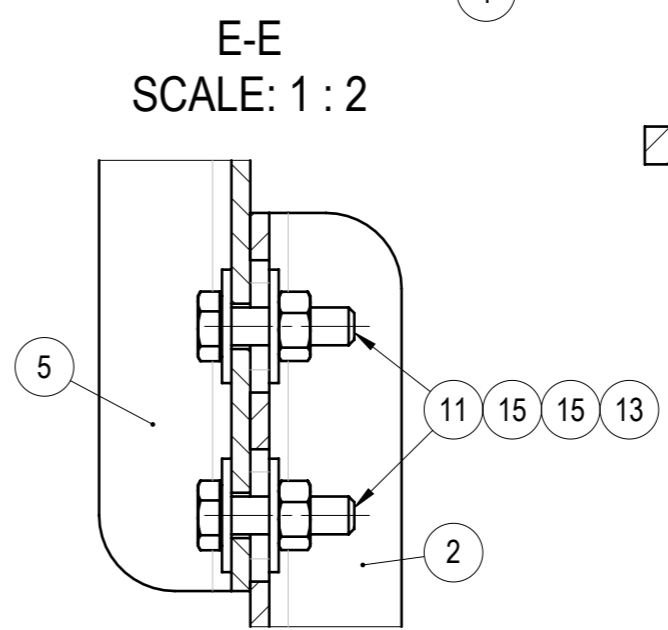
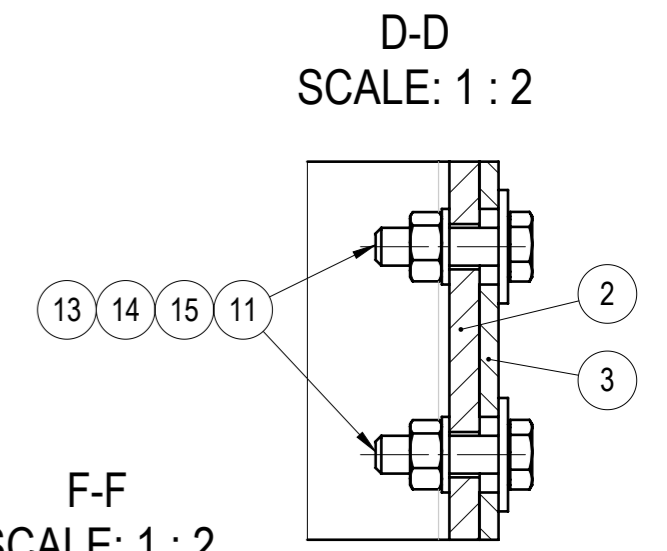
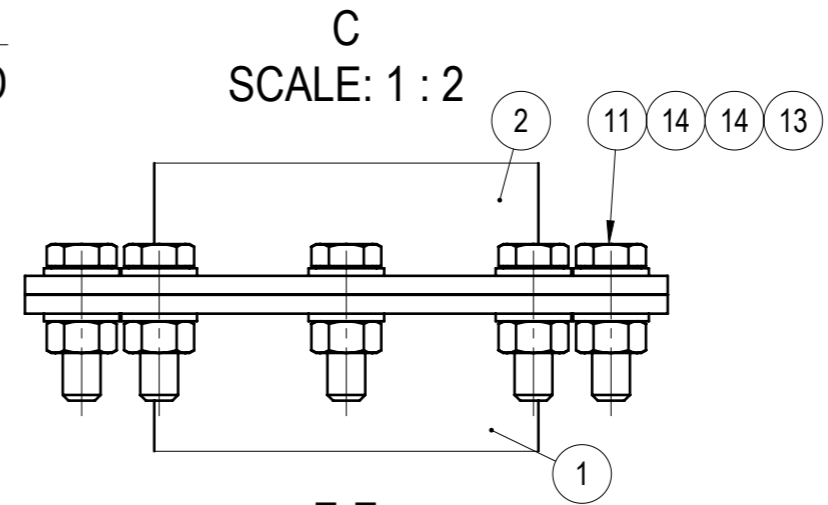
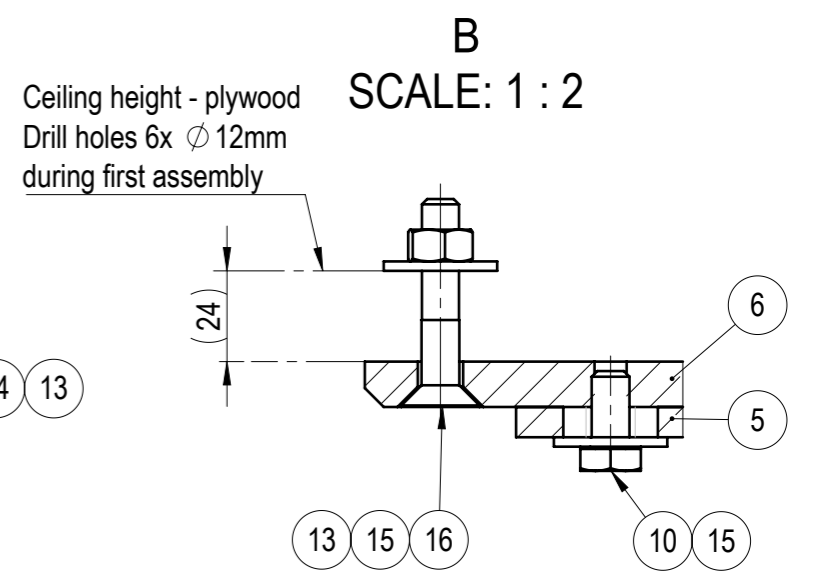
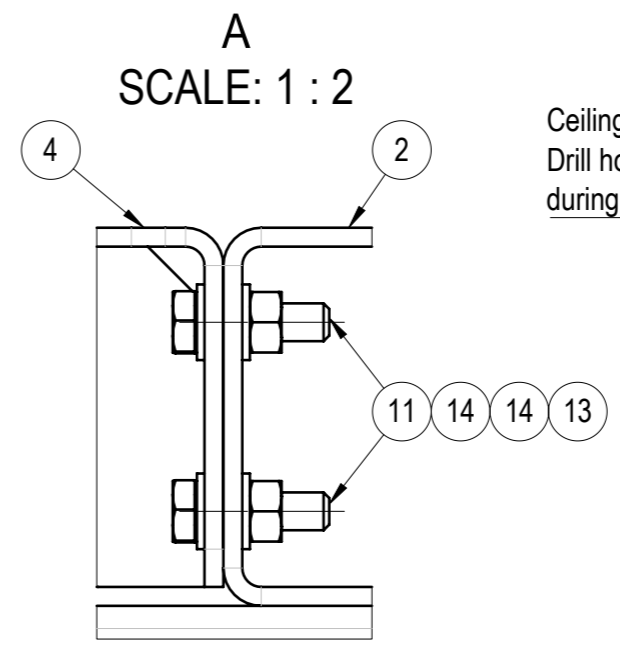
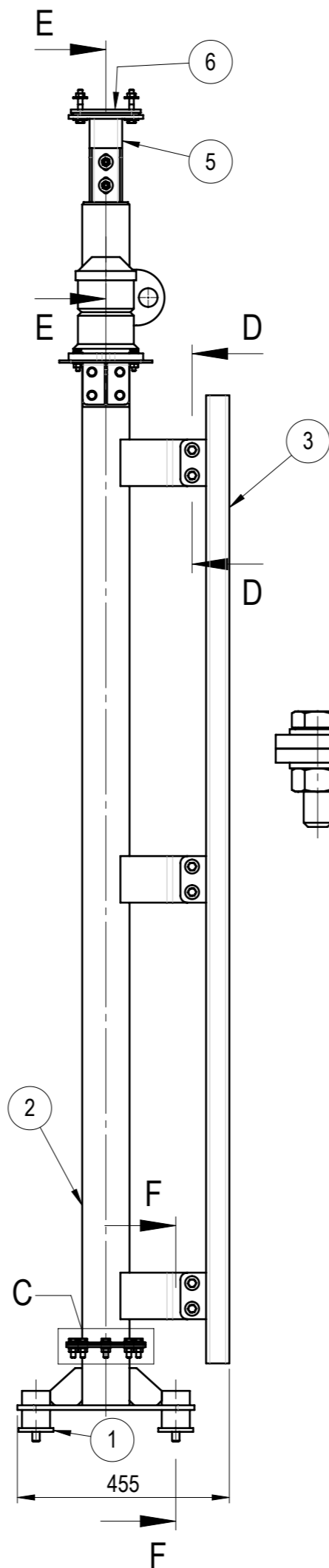
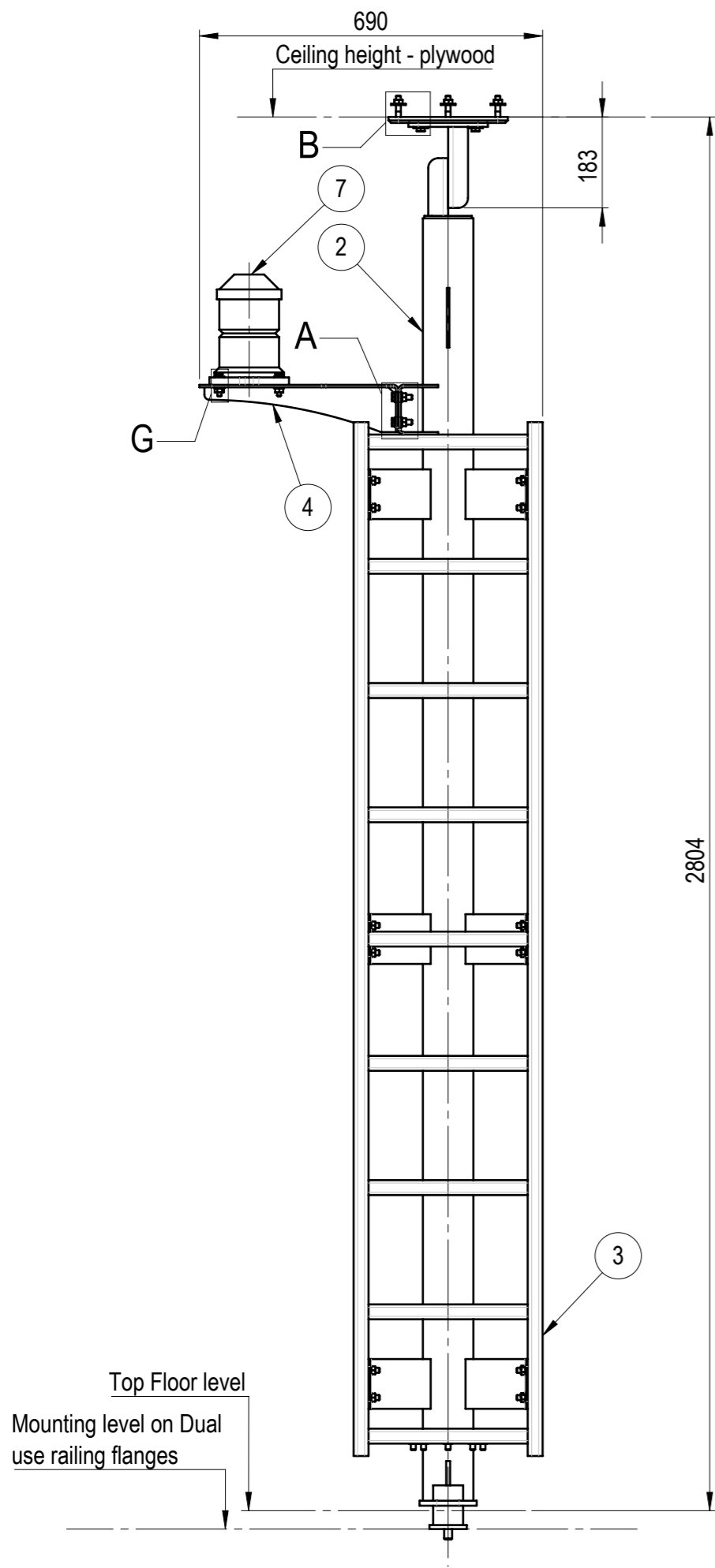


NO.	PART NO	DESCRIPTION	MATERIAL	PROCESSING	REVISION	WEIGHT	QTY
1	105-80210-00	Navigation light mast weldment 1	-	WLD PNT		6.37	1
2	105-80220-00	Navigation light mast weldment 2	-	WLD PNT		30.16	1
3	105-80230-00	Navigation light mast ladder	-	WLD PNT		25.28	1
4	105-80240-00	Navigation light bracket weldment	-	WLD PNT		3.79	1
5	105-80250-00	Mast ceiling bracket	-	WLD PNT		2.33	1
6	105-80200-01	Mounting plate	S355	LC MCH PNT		3.15	1
7	DHR55N	Navigation light	-	COTS		1.48	1
8	DIN7349 M16	Thick washer	HDG-HV200	COTS		0.05	2
9	ISO4017 (DIN933) M8x40	Hex bolt	HDG-8.8	COTS		0.02	4
10	ISO4017 (DIN933) M10x20	Hex bolt	HDG-8.8	COTS		0.02	4
11	ISO4017 (DIN933) M10x35	Hex bolt	HDG-8.8	COTS		0.03	26
12	ISO4017 (DIN933) M16x35	Hex bolt	HDG-8.8	COTS		0.09	2
13	ISO4032 (DIN934) M10	Hex nut	HDG-8	COTS		0.01	36
14	ISO7089 (DIN125) M10	Plain Washer	HDG-HV200	COTS		0.00	44
15	ISO7093 (DIN9021) M10	Large plain washer	HDG-HV200	COTS		0.01	26
16	ISO10642 (DIN7991) M10x55	CSK socket screw	FlakeZn-8.8	COTS		0.04	6

		MATERIAL	WEIGHT	DEBURR AND BREAK SHARP EDGES	REVISION	DATE	
		-	74.921 Kg	DO NOT SCALE DRAWING		03.07.2025	
NAME: D. Dislers SIGNATURE: E. Kriviss		SURFACE PROTECTION	MACHINING	THERMAL CUTTING	WELDING	SCALE	FORMAT
		-	ISO 2768 mK	ISO 9013 221	ISO 13920 BF	1:10	A3
PART NO.		105-80200-00					
DESCRIPTION		Navigation light mast assembly				SHEET 1/2	



		MATERIAL	WEIGHT	DEBURR AND BREAK SHARP EDGES	REVISION	DATE
		-	74.921 Kg	DO NOT SCALE DRAWING		03.07.2025
		SURFACE PROTECTION	MACHINING	THERMAL CUTTING	WELDING	SCALE
		-	ISO 2768 mK	ISO 9013 221	ISO 13920 BF	1:12
		PART NO.	105-80200-00			FORMAT
Designed by		D. Dislers				
Drawn by		E. Kriviss		DESCRIPTION		
Technical ref.				Navigation light mast assembly		
						SHEET 2/2